



International School Links

Fast Track College (Senior High School) and Bedomase Methodist Junior High School, Agona-Ashanti, Ghana and Longdean School.

Eight visits between the schools (2008-2018)

- Fast Track College and Bedomase Methodist Junior High School, Agona-Ashanti, Ghana and Longdean School. Linked for thirteen years.
- Funding from British Council.
- Fund raising by students (School Walk, non uniform and other fund raising).
- The Schools Co-operative Society has supported our work.
- Visit planned for post-pandemic to open new school.





The finished ICT Centre and its impact since 2012

- Used by 15 schools
- Thousands of students
- The whole community
- Adult illiteracy challenged
- Self-financing
- Job creating



Visit to Fast Track and Bedomase 2018



Visit to Fast Track and Bedomase 2018



Visit to Fast Track and Bedomase 2018



Visit to Fast Track and Bedomase 2018



Visit to Fast Track and Bedomase 2018



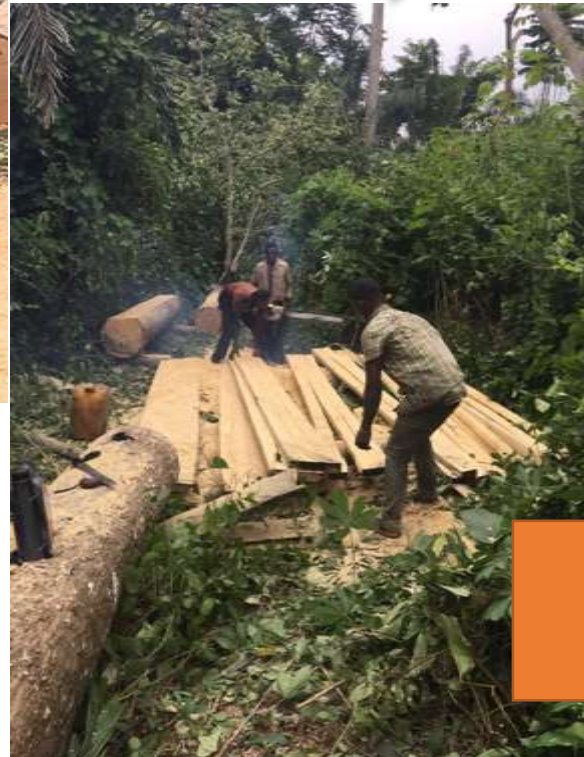
What has happened since?



There was no Senior High School in or near the village. We have helped to start building a new facility. £1500 was donated by the Schools Cooperative Society in early 2016 and was spent on land clearance for the new school building. £1000 from a non uniform day (November 2017) goes to improving the water facilities in the temporary school building.

What has happened since?

Initial clearance of the granted land from the council of local tribal chiefs.



Mr Abu our link teacher guiding operations



150 bags of cement
bought to start
mounding the blocks



Excavator donated
for use by the
District Assembly.

The new Fast Track College school building (Spring 2020)



500 books arrive June 2020 to set up the school library. Charity Books2Africa shipped the books following fundraising by Longdean students.



April 2021 School building almost complete.
Library open. School enrolling students.



April 2021 School building almost complete.
Library open. School enrolling students.



An outstanding and truly international school.

- International Schools Award since 2010.
- Global Learning Programme Expert Centre.
- One of the most culturally diverse schools in Hertfordshire.
- Global learning opportunities through fieldtrips and in lessons.
- Honourable mentions: SSAT Journal article 2017, SSAT National Conference, Royal Geographical Society Best Practice 2018, Parliamentary Review 2019.

